

TYPICAL FLOOR PLAN

2ND - 19TH FLOOR



APARTMENT A

3BHK 1933 SQ. FT.
RERA CARPET AREA 1210 SQ. FT.
EXCLUSIVE AREA 164 SQ. FT.



KEY PLAN



APARTMENT A

3BHK 1395 SQ. FT.
RERA CARPET AREA 839 SQ. FT.
EXCLUSIVE AREA 142 SQ. FT.



KEY PLAN



APARTMENT C

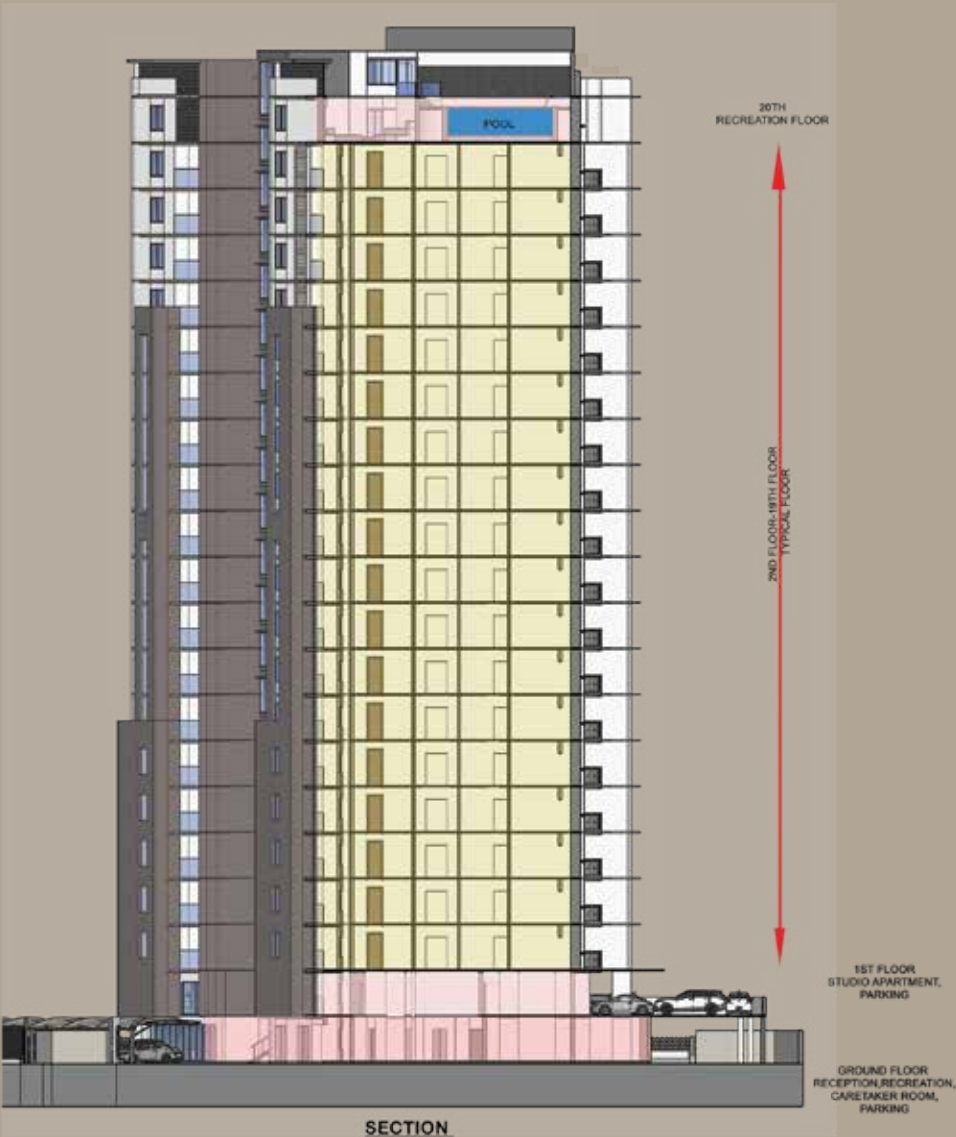
3BHK 2121 SQ. FT.
RERA CARPET AREA 1290 SQ. FT.
EXCLUSIVE AREA 216 SQ. FT.



KEY PLAN



APARTMENT SECTION PLAN



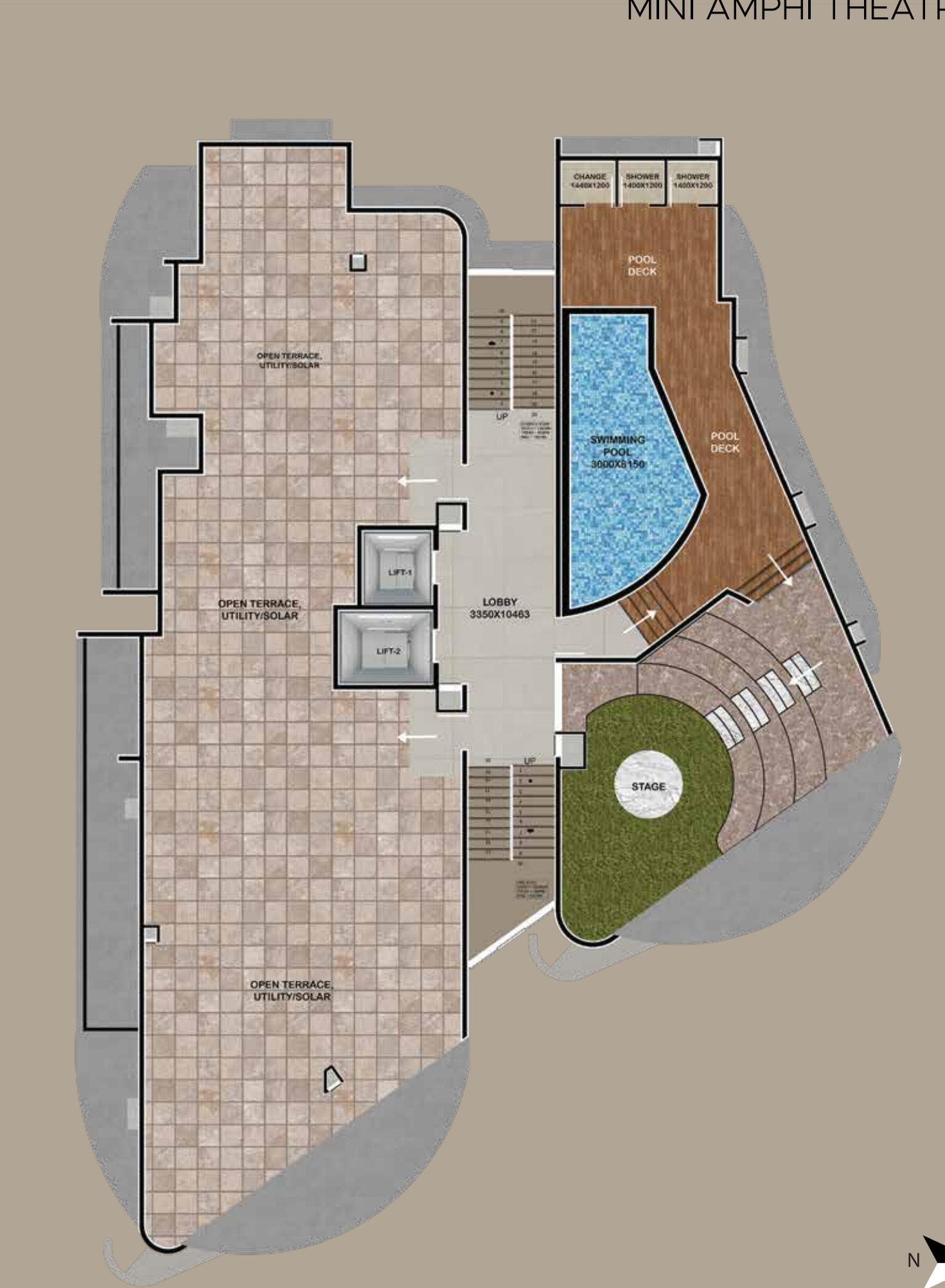
20TH FLOOR

HEALTH CLUB
RECREATION AREA
STEAM BATH AREA
PARTY AREA

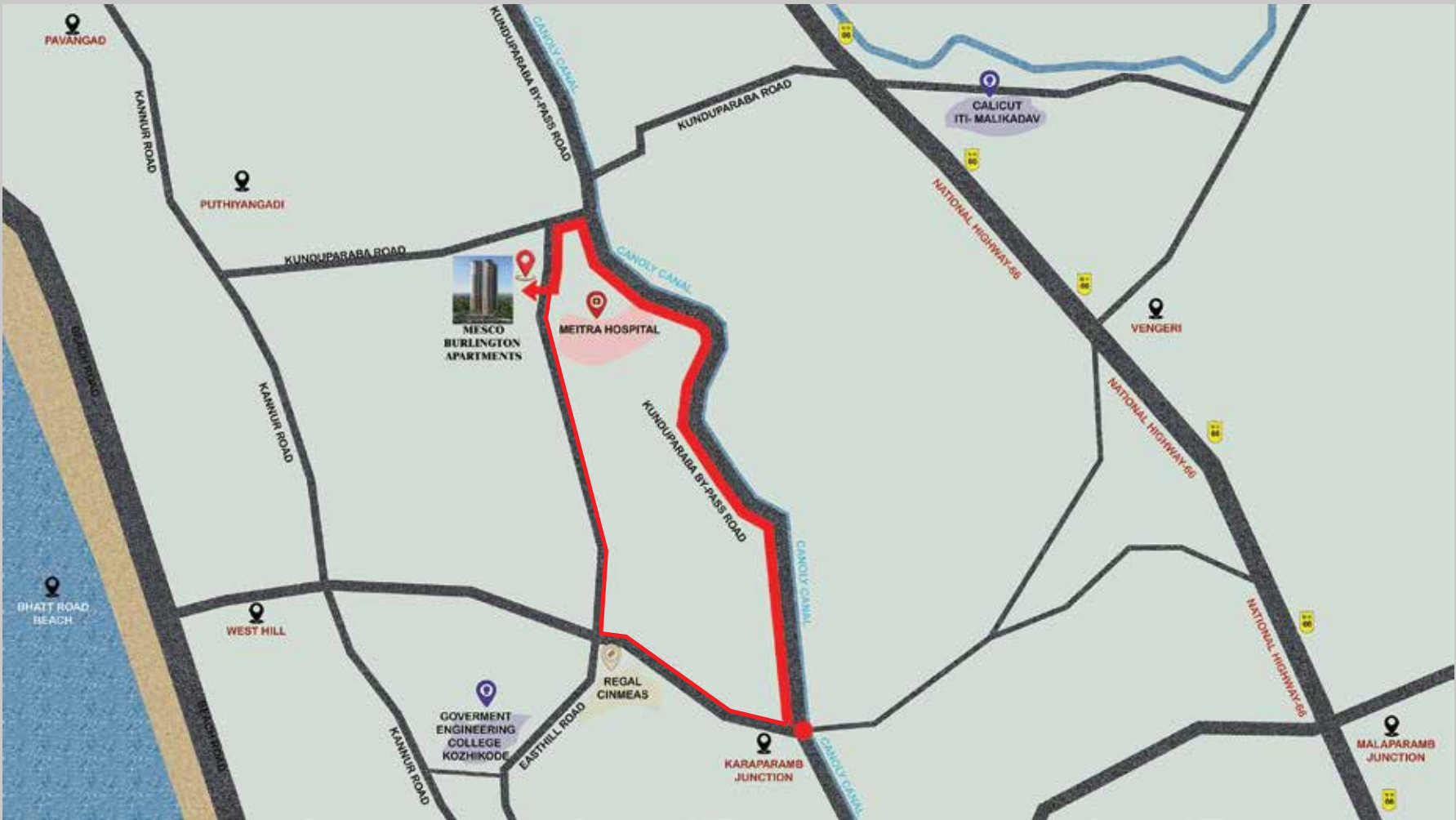


TERRACE FLOOR

SWIMMING POOL
CHILDRENS PLAY AREA
MINI AMPHI THEATRE



LOCATION MAP



EXCULSIVELY CONNECTED

MEITRA HOSPITAL	100 M	BEACH	3 KMS
REGAL CINEMAS	3 KMS	AIRPORT	31.5 KMS
MOFFUSIL BUS STAND	6 KMS	RAILWAY STATION	7.8 KMS
KSRTC BUS STAND	6 KMS	BABY MEMORIAL HOSPITAL	5.8 KMS
CIVIL STATION	4.1 KMS	MEDICAL COLLEGE	10.2 KMS
CORPORATION EMS STADIUM	7.3 KMS	ENT HOSPITAL	3 KMS
MALABAR CHRISTIAN COLLEGE	5.3 KMS	GOVT. ENGINEERING COLLEGE	5 KMS
CORPATION OFFICE	8.6 KMS		

PRODUCT SUPERIORITY ASSURED

Structure	:	R.C.C framed structure with cement/ laterite partition wall
Flooring	:	Vitrified tile flooring in the Foyer, Living, Kitchen, Dining, Corridors and all Bedrooms
Toilets	:	First quality tiles for floors and walls upto false ceiling
Joinery work	:	Countrywood frames and doors for main entrance. Factory made moulded shutters with country wood frames for inside doors UPVC/Aluminum for balcony door cum window & Aluminum window systems with MS grills.
Painting	:	Two coat putty, one coat primer and two coat premium emulsion for interior walls and ceiling Two coat exterior emulsion paint over primer coat
Electrical	:	Three Phase concealed copper wiring with adequate light, fan and other piug points Premimum quality modular swithces independent meters for each flat DG backup for selected points inside apartment Provision for AC in all bedrooms and living room Provision for exhaust fan in all toilets and kitchen Provision for geyser in all bathrooms
Kitchen	:	Polished granite slab for kitchen counter Ceramic tile above counter to a height of 60cms
CP & Sanitary Fittings	:	Reputed brand's wall hung sanitary fixtures with concealed cistern in all toilets Reputed brand's CP fittings
Security Systems	:	CCTV coverage for selected common areas